



Heartland Health

Breast Cancer Study 2003 - 2007

Robert Johnson, MD
Radiation Oncology

A large number of breast cancer patients are evaluated and treated at Heartland Regional Medical Center. Well over 120 patients are seen and treated each year from 2002 through 2007. The majority of these cancers are picked up on a screening mammogram. The stage distribution remains the same as in years past.

Multimodality treatment has continued to be a hallmark of the care that breast cancer patients receive. Within the last year, the physicians at HRMC have developed a breast cancer multimodality conference meeting after our routine tumor board conference each week. The pathologic and radiographic findings are discussed by a multidisciplinary team of physicians including medical oncologists, breast surgeons and radiation oncologists.

In addition to the dedicated breast tumor conference, a new Breast Clinic has been developed driven by the breast surgeons and radiologists. The new center will provide clinic exam rooms, procedure rooms, family and patient conference rooms as well as the latest technology in breast imaging, including digital mammography. Radiologists trained in breast MRI provide diagnostic evaluation as well as the ability to perform MRI directed biopsies.

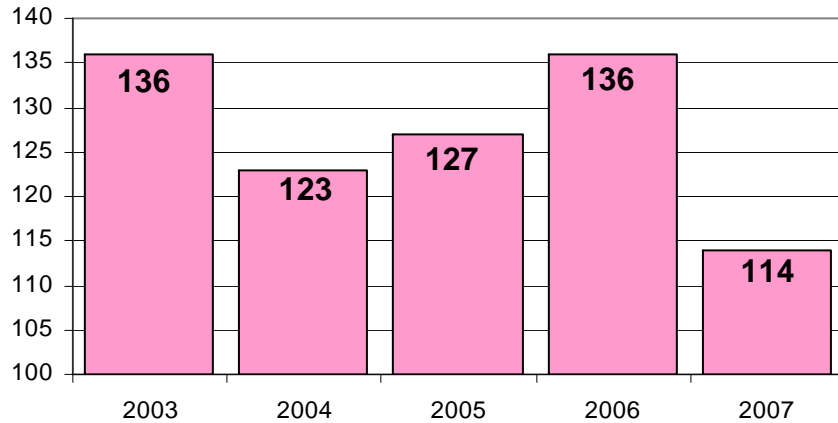
Each patient found to have an abnormal mammogram or abnormal physical findings are followed by a Nurse Navigator who will educate the patient and facilitate their services through the diagnostic and interventional process as well as oncologic evaluations if required. This will shorten the time from an abnormal finding to initiation of the appropriate care for that individual patient.

The 5-year survival survival rates remain comparable and slightly higher in Stages 0, I, II and III with national results. The use of sentinel lymph node evaluation has become the standard of axillary lymph node evaluation among all surgeons. Standards from the NCCN and most recently from our affiliation with the MD Anderson Physicians Network are being established between all treating physicians.

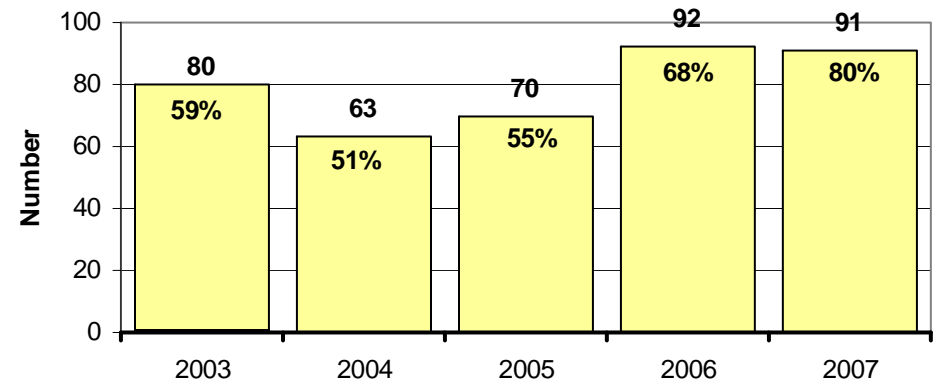
Patients receiving breast preserving therapy represent, on average, two-thirds of our patients receiving some form of breast surgery. The remainder of patients had a mastectomy.

The 5 year distribution of initial therapy is illustrated as well as the distribution of breast cancer patients across age groups.

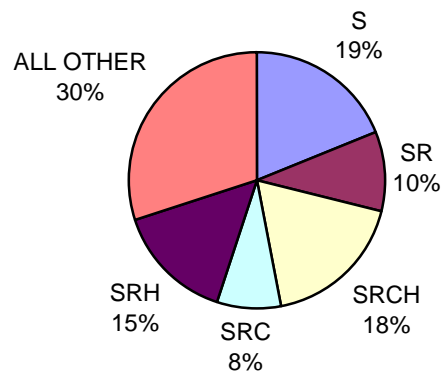
HRMC Breast Cancer Incidence by Year



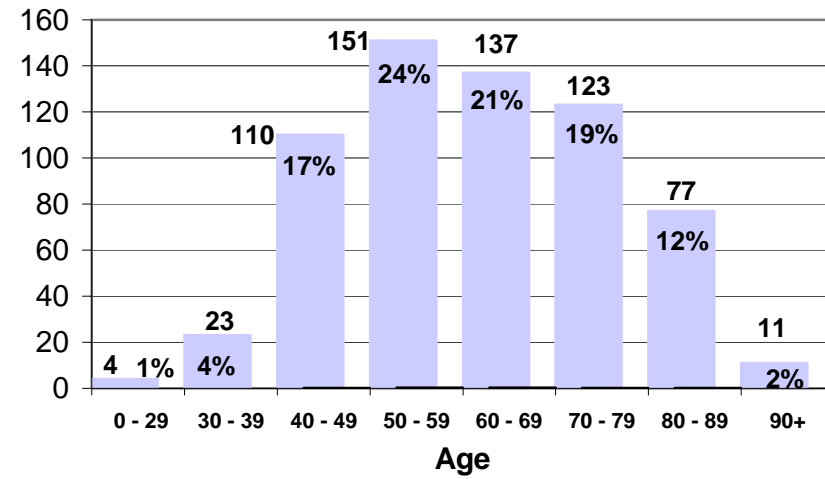
HRMC Breast Cancer Detected by a Screening Mammogram



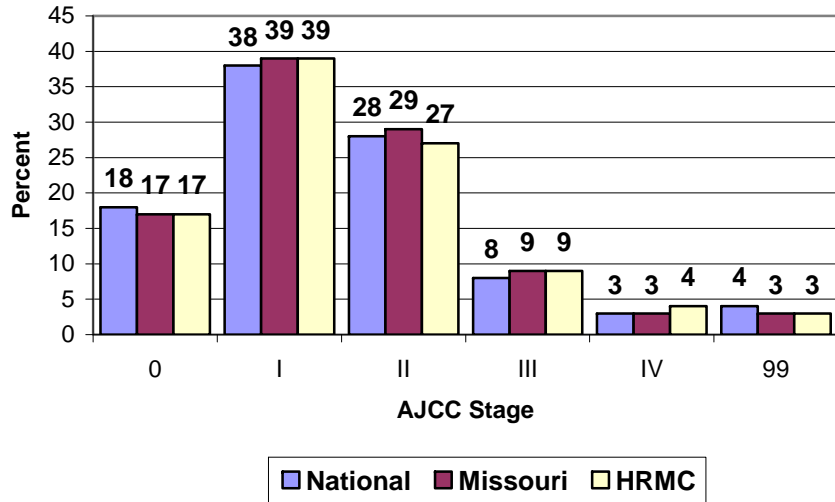
HRMC Breast Cancer Initial Therapy 2003 - 2007



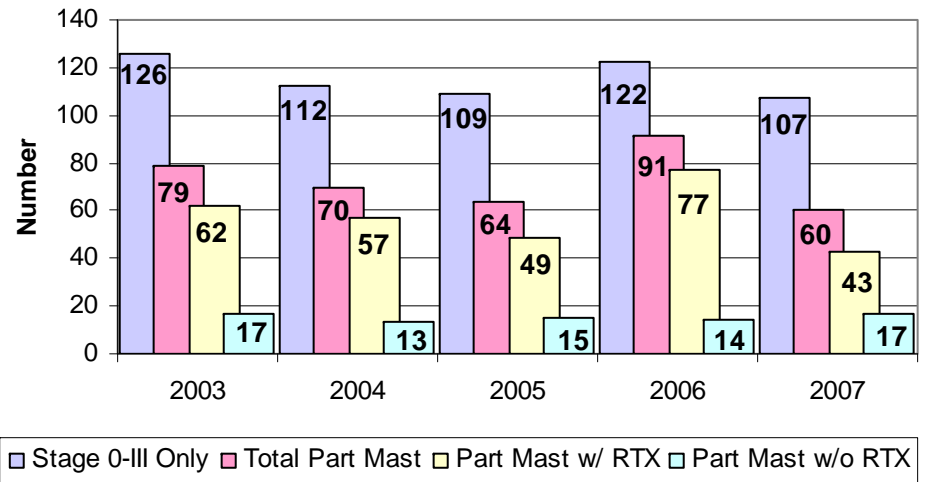
HRMC 5-Year Breast Cancer Cases by Age at Diagnosis



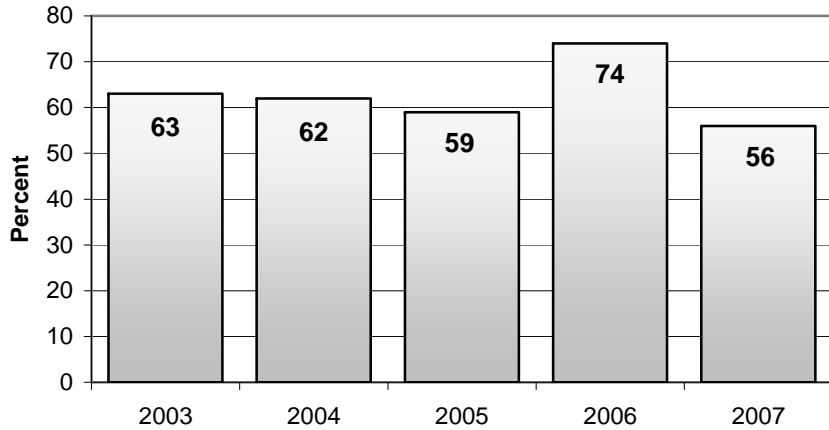
HRMC Percent 5-Year Distribution



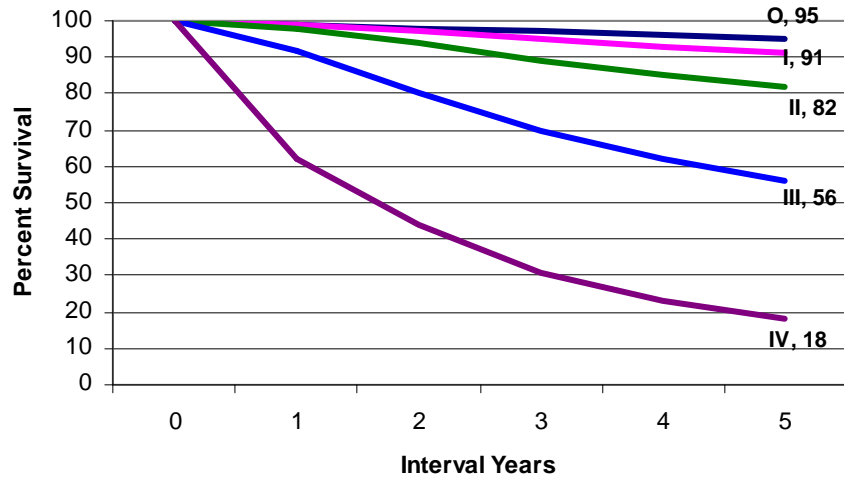
HRMC 5-Year Partial Mastectomy & Radiation Therapy Comparison Stage 0 to III Only



HRMC Percent Treated by Partial Mastectomy



National Cancer Database 5-Yr Relative Survival



HRMC 5-Yr Relative Survival

