



## Five Year Lung Study 2004 - 2008

There were a total of 3,741 analytic cancer cases diagnosed at Heartland Regional Medical Center (HRMC) between 2004 and 2008. Fifteen percent were Non-Small Cell Lung Cancer (NSCCA) and two percent were Small Cell Lung Cancer (SCCA). For both NSCCA and SCCA there were significant “stage unknown” patients, shown in the graph in **Table 1**. It should be noted that staging has greatly improved in recent years.

Treatment by stage is depicted in **Tables 2a and 2b**. Surgery is still the treatment of choice for early stage lung cancer. Combined modality is used for late stage cancer.

Five year relative survival is compared to national figures and is shown in **Table 3**. The data confirms that the survival of NSCCA and SCCA seen at HRMC are comparable to the National Cancer Data Base (NCDB) figures, after making allowances for small numbers compared to NCDB numbers.

Table 1.

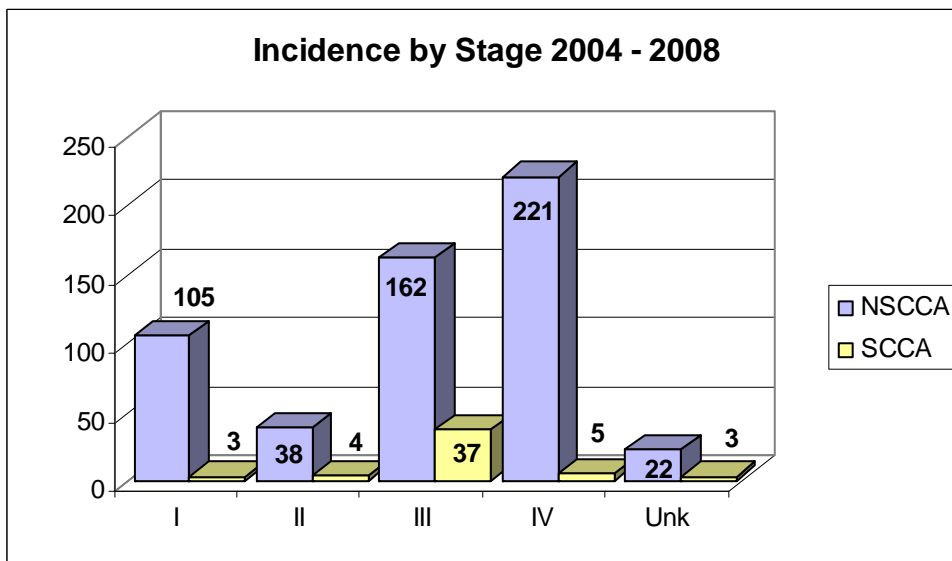


Table 2a.

HRMC First Course Treatment  
2004 – 2008

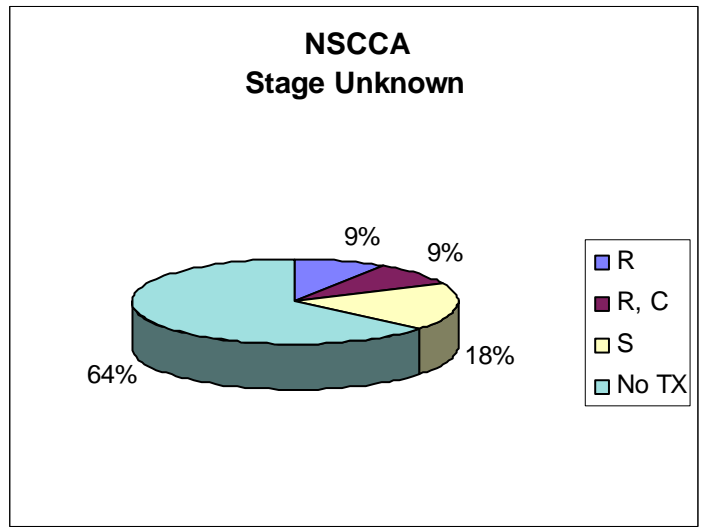
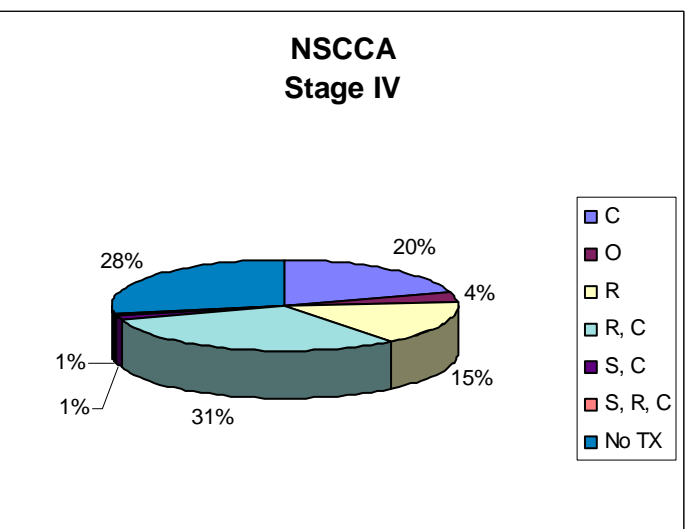
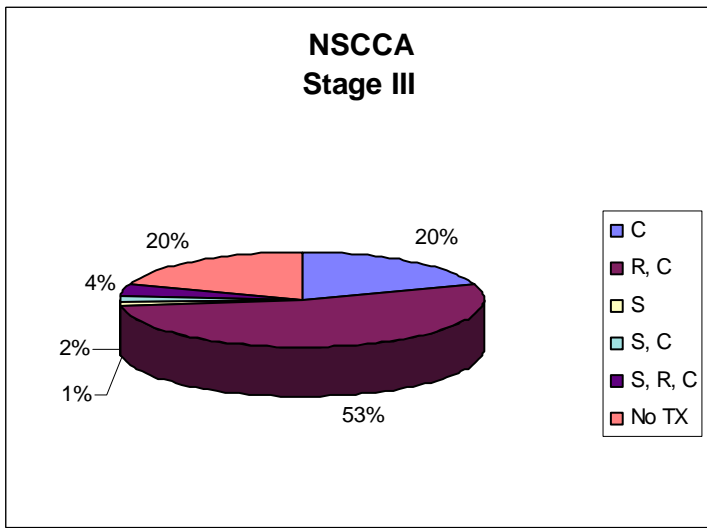
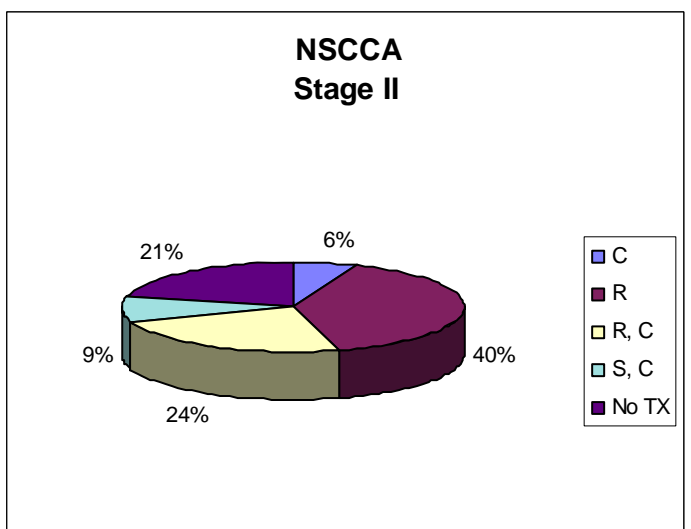
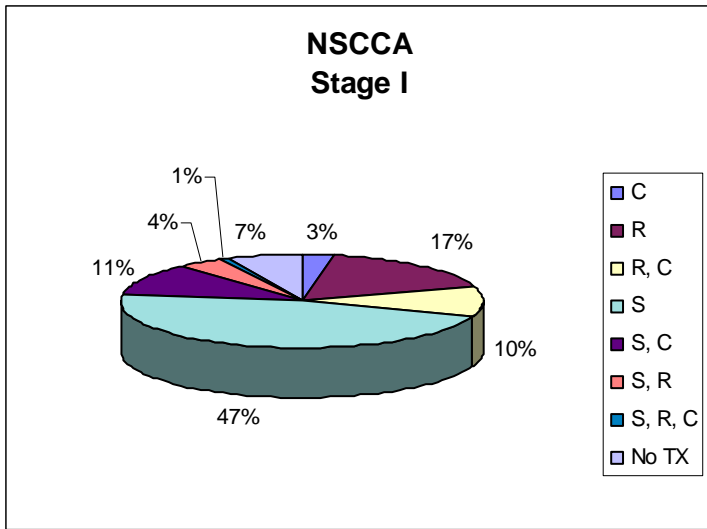


Table 2b.

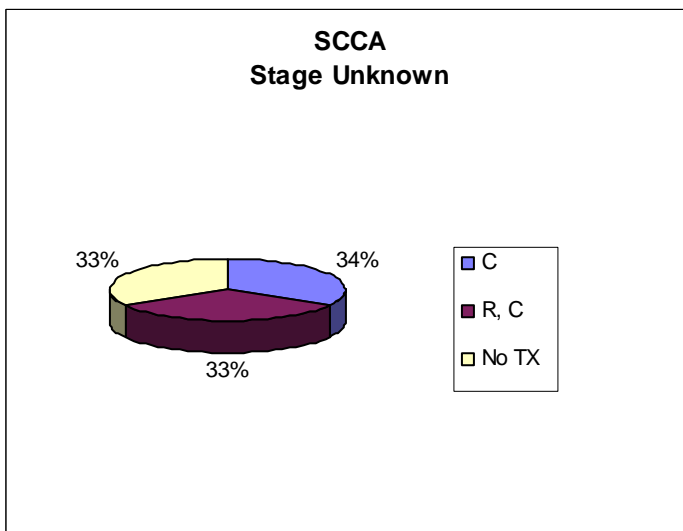
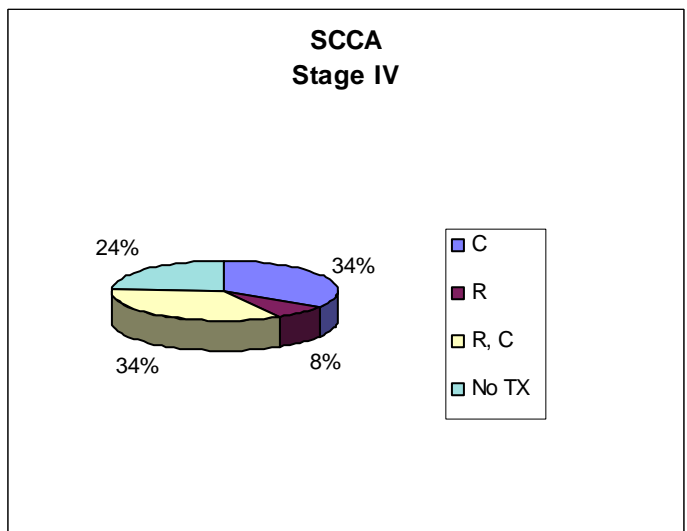
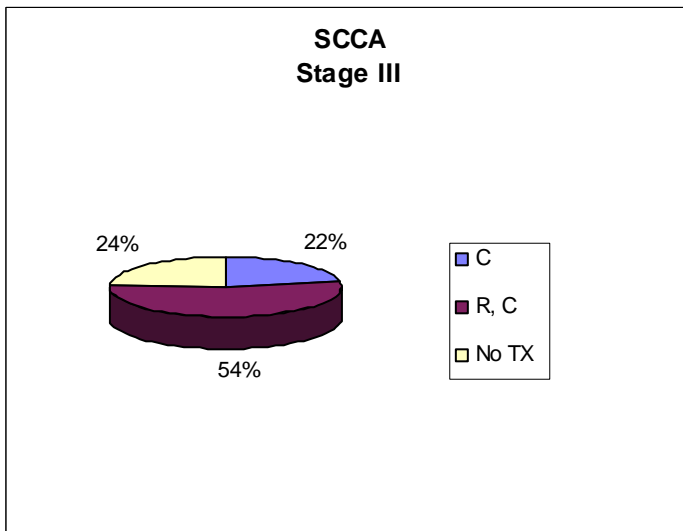
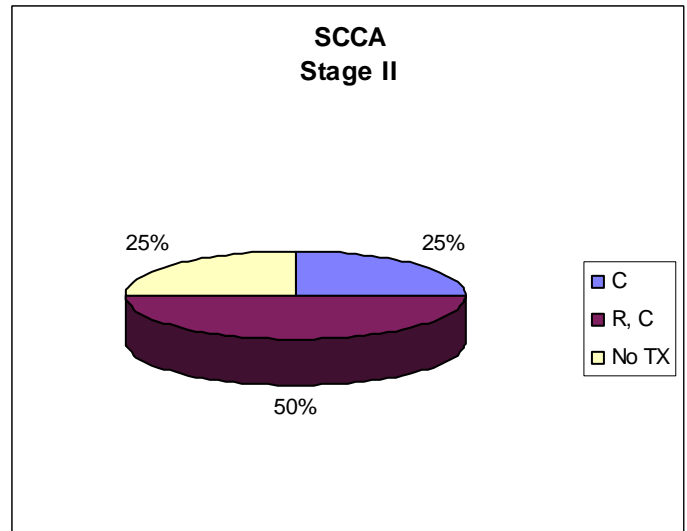
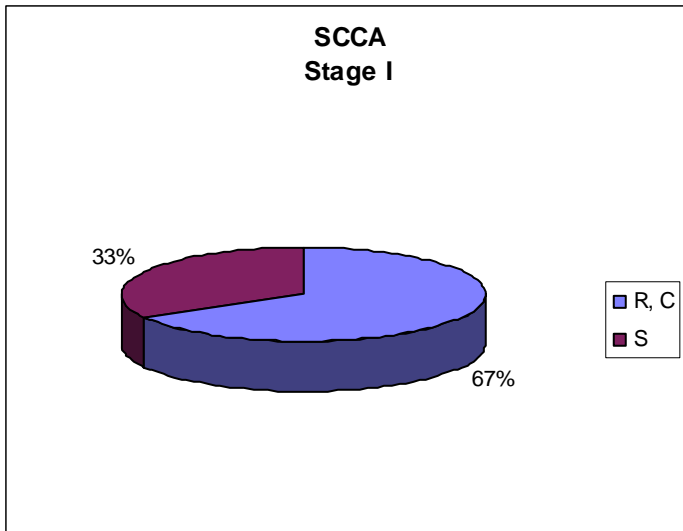
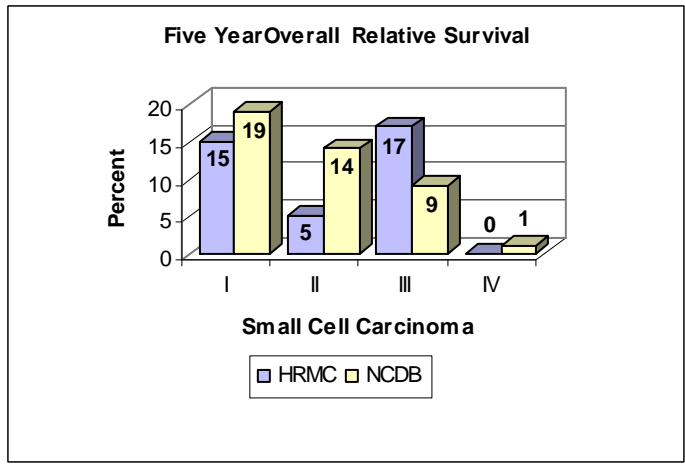
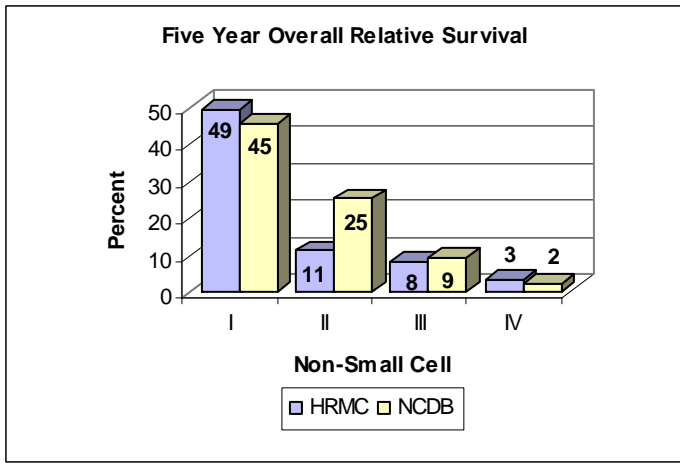


Table 3.



Dr. Vicram Gupta, MD  
 Medical Oncology