



KIDNEY CANCER 2002 – 2006

Around 51,000 cases of kidney cancer were diagnosed in the United States last year.

The median age of patients diagnosed with kidney cancer is around 60 years old. The incidence of males to females is 3/2.

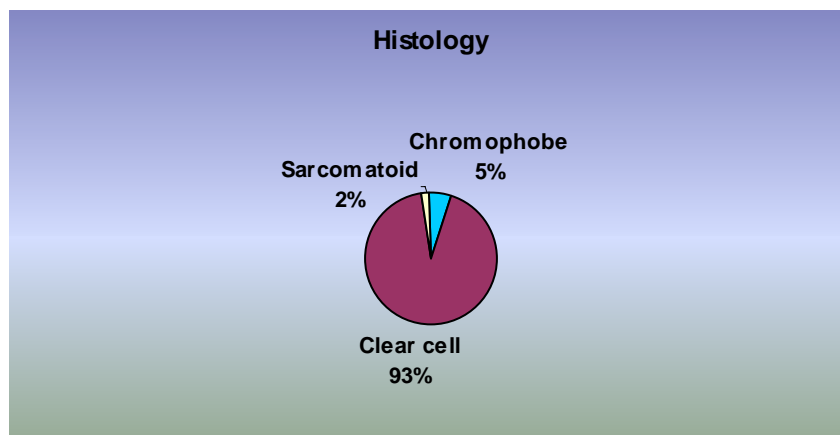
Surgery is the primary modality for treatment of localized disease, with 5-year survival ranging from 50-90% depending on stage. Thirty percent of patients present with metastatic disease, giving them a 5-year survival rate of 10-15%.

Kidney carcinoma has different histologies; clear cell, papillary, chromophobe, oncocytoma, and collecting duct carcinoma.

From 2002-2006, one hundred forty two cases of kidney cancer were diagnosed at Heartland Regional Medical Center. The median age at diagnosis was 60 years old. The incidence of males to females was 2/1.

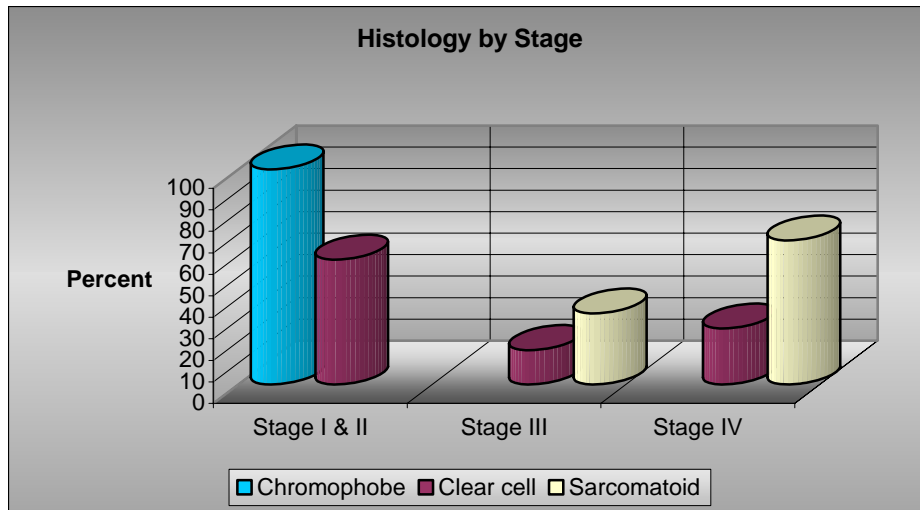
Histologically; 93% were clear cell, 5% were chromophobe, and 2% were sarcomatoid. (Fig. 1)

Fig. 1



Fifty eight percent of the patients with clear cell cancer presented with stage I and II disease, 26% of patients presented with stage IV, as expected nationally. (Fig. 2)

Fig. 2

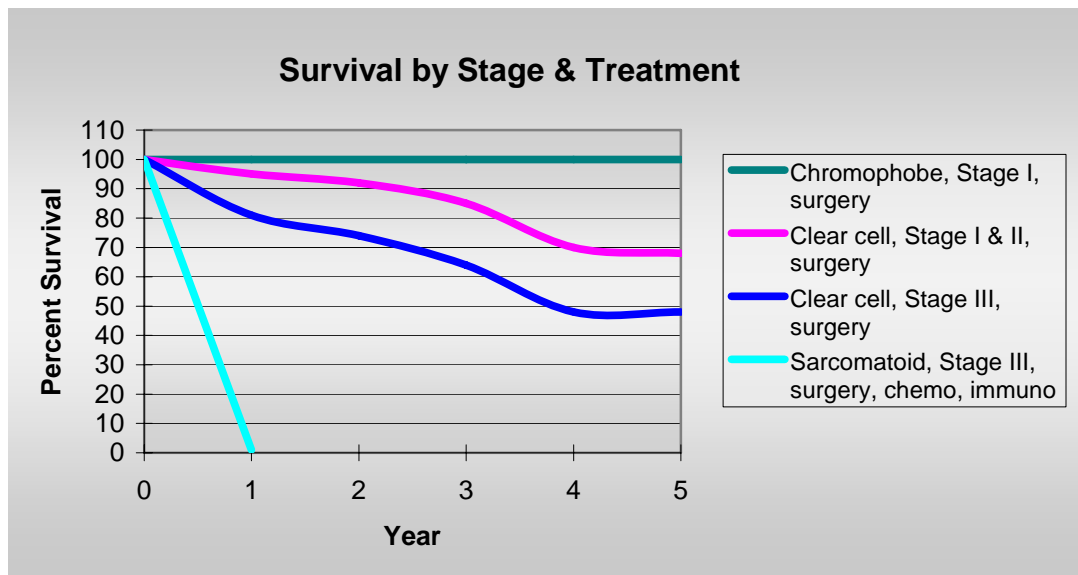


Nephrectomy was the primary treatment modality for 73% of patients with clear cell carcinoma, and 100% for those with chromophobe carcinoma.

Figure 3 shows 100% of the patients with chromophobe carcinoma alive at five years. The five-year survival rate for clear cell carcinoma stages I & II is 70% and stage III is 50%.

Unfortunately none of the kidney cancer patients with sarcomatoid features survived more than 1 year. These results are very comparative to published national survival rates.

Fig. 3



Rony Abou Jawde, MD
Medical Oncology